

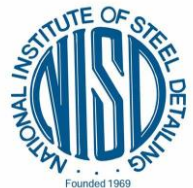


Adept Engineering Solutions Private Limited  
(An ISO 9001:2015 Certified Company)

# WELCOME



# Presentation of Structural Steel Detailing

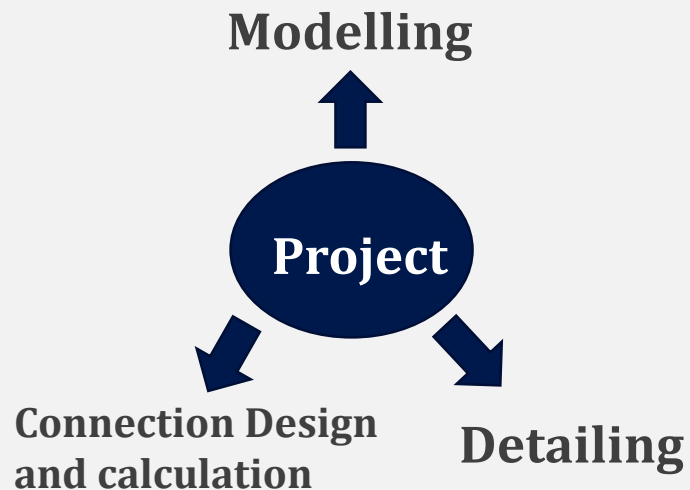


## ABOUT ADEPT

- We are an Engineering Services Company incorporated and Located in Namakkal-India.
- We services customers globally for their Civil & Structural Engineering needs.
- We have a team of Engineering with over **25+ years experience**.
- We have a diverse portfolio of industry segments which includes Bulk Material handling, Commercial and Institutional Buildings also Industries like Petrochemical, Automobiles and oil & Gas.
- Our Integrative team and their process method assures most responsive, accurate and cost effective process for each client
- We use advanced and successful software packages including SDS2, TEKLA Structures, Advance Steel, AutoCAD, Blue Beam, Idea StatiCa, Giza, RAM Connection, STAAD Pro.

# Capabilities

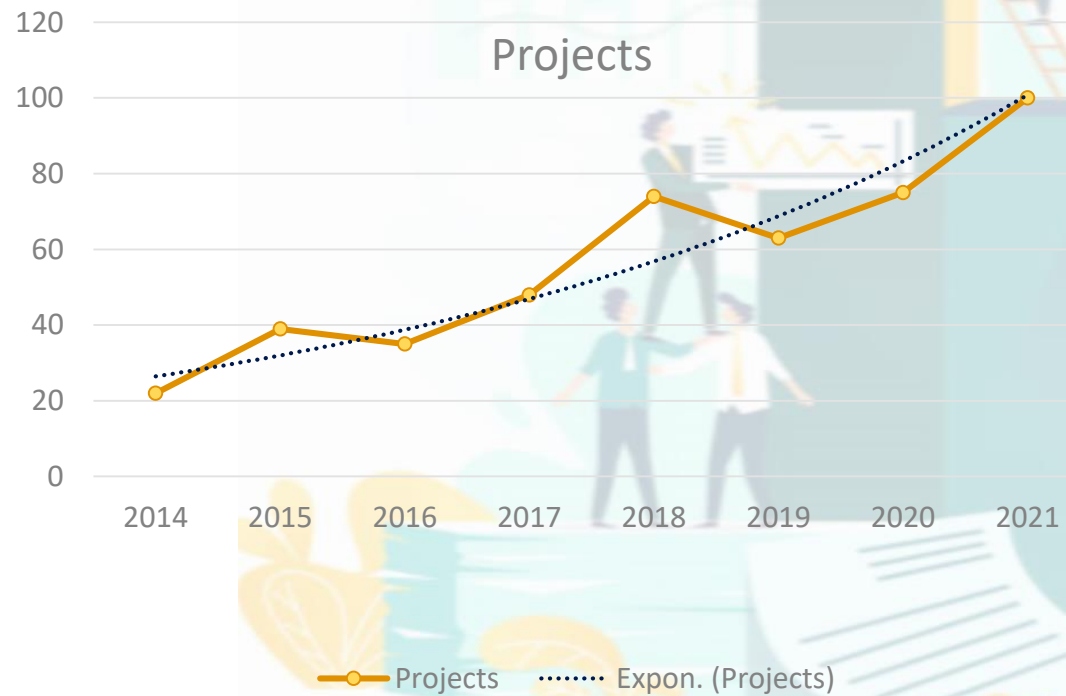
1. Structural Steel 3D Modelling and Detailing
2. Connection Design and Calculation
3. Drafting Services
4. BIM Services
5. Estimation and Quantity Take Off
6. R & D services.
7. Miscellaneous Steel Detailing



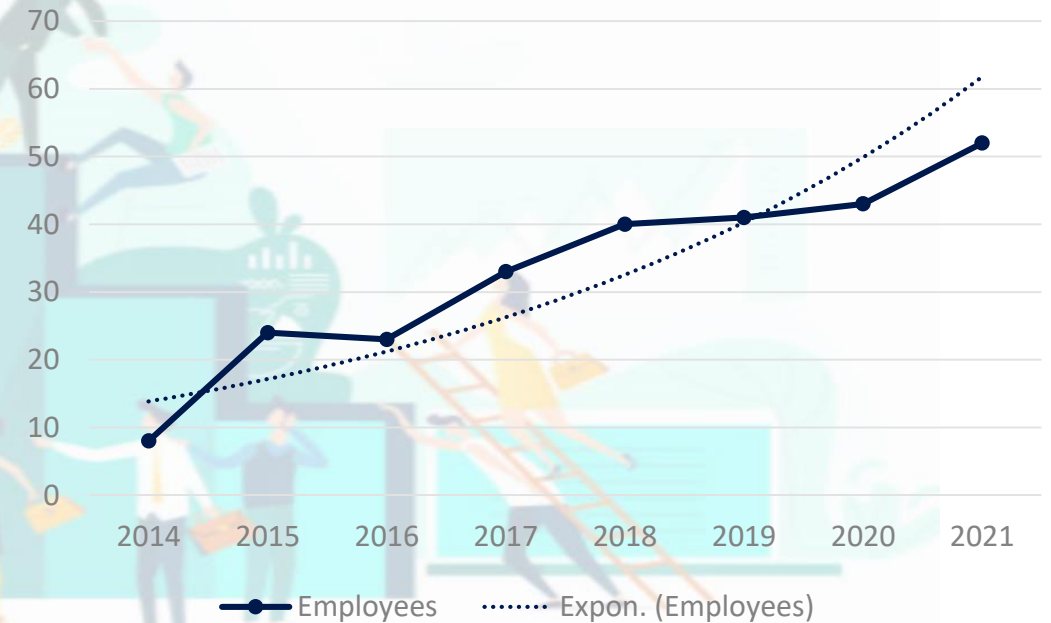


# This is US

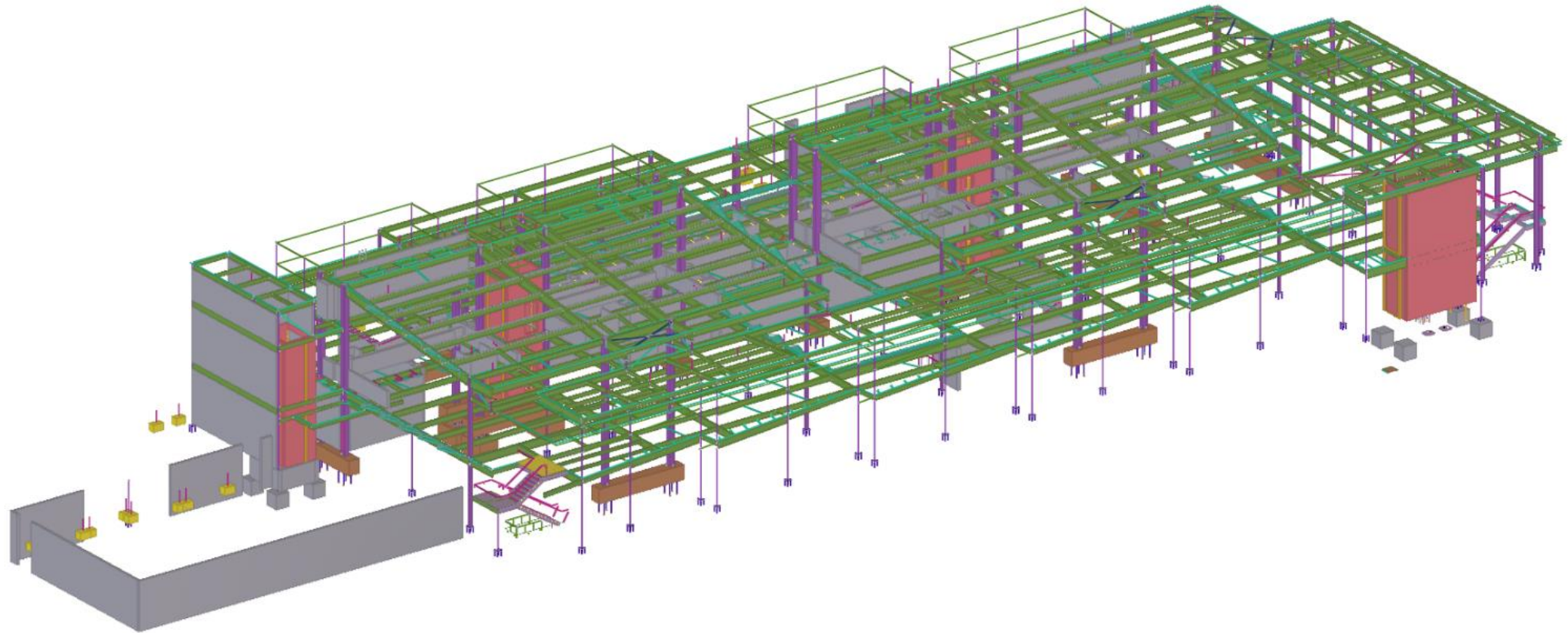
## Projects



## Employees

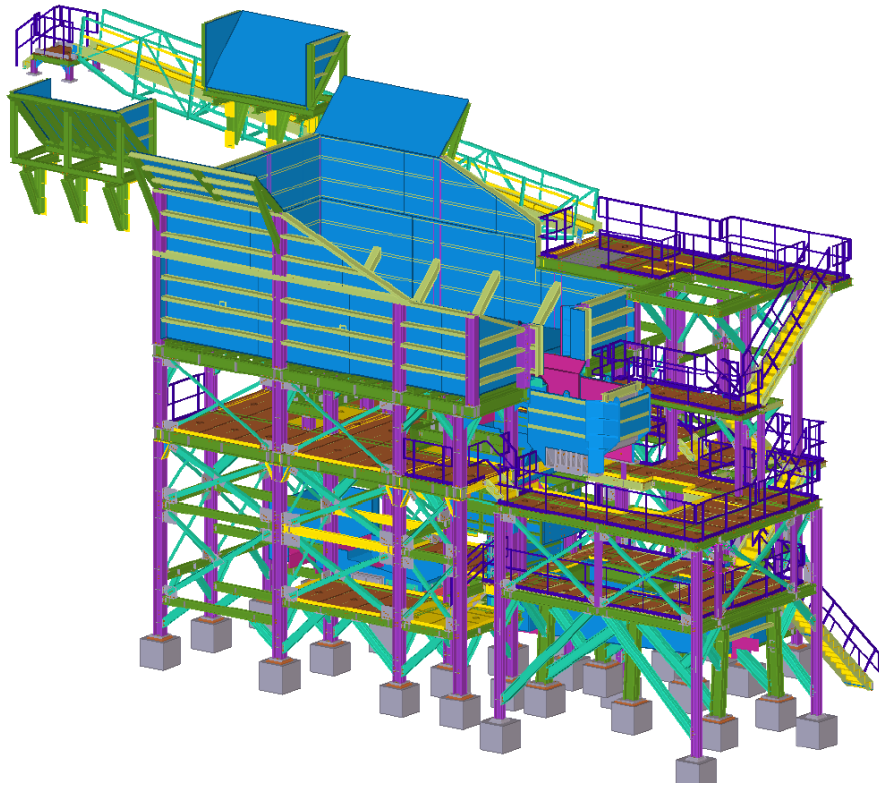


# Tekla Project

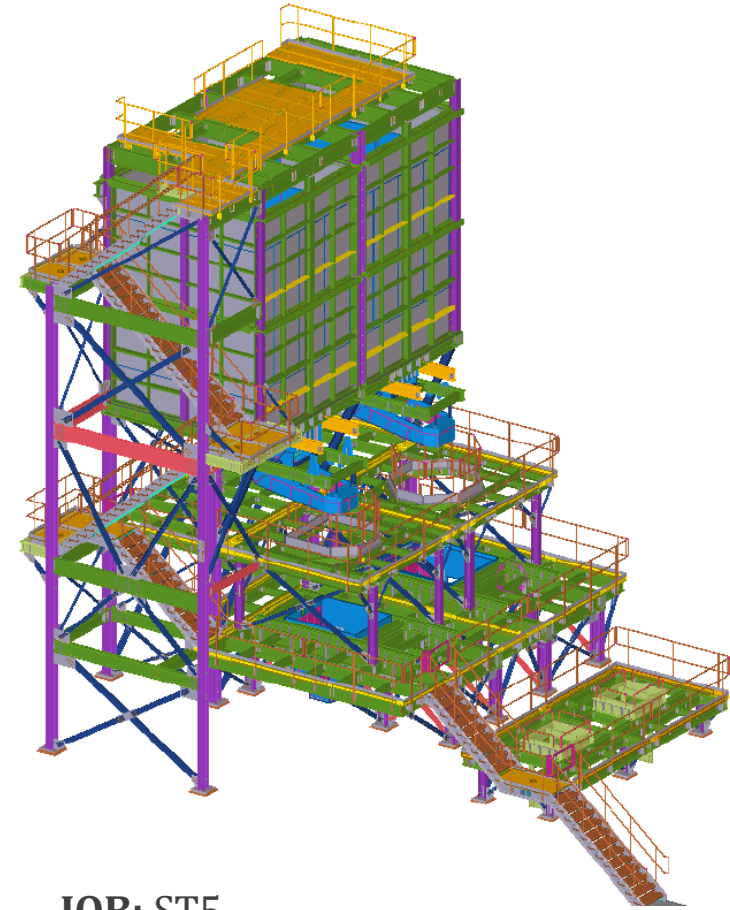


**JOB:** NEW EL CENTRO COURTHOUSE  
**LOCATION:** [EL CENTRO, CALIFORNIA](#)

# Tekla Project



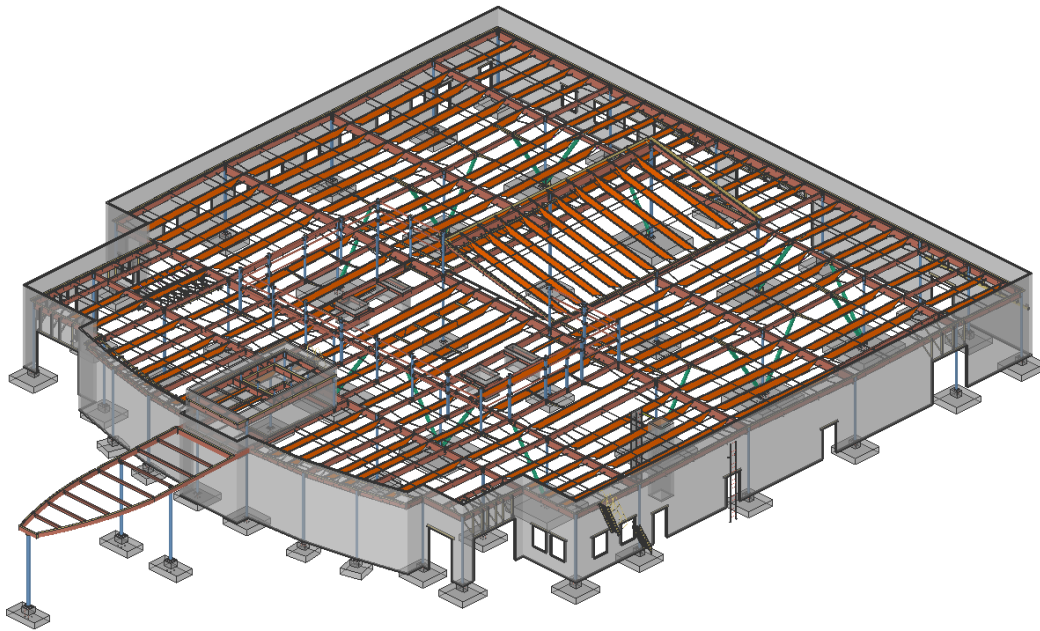
**JOB:** POWHATAN PRIMARY UNIT  
**LOCATION:** POWHATAN, VA



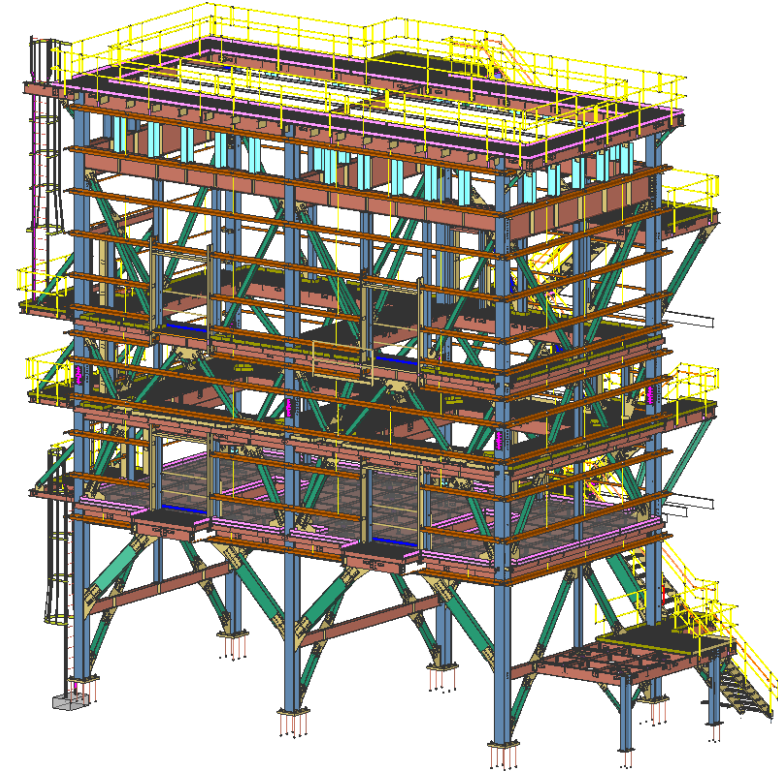
**JOB:** ST5  
**LOCATION:** NORTH COLUMBIA,  
SOUTH CAROLINA



# SDS2 Project



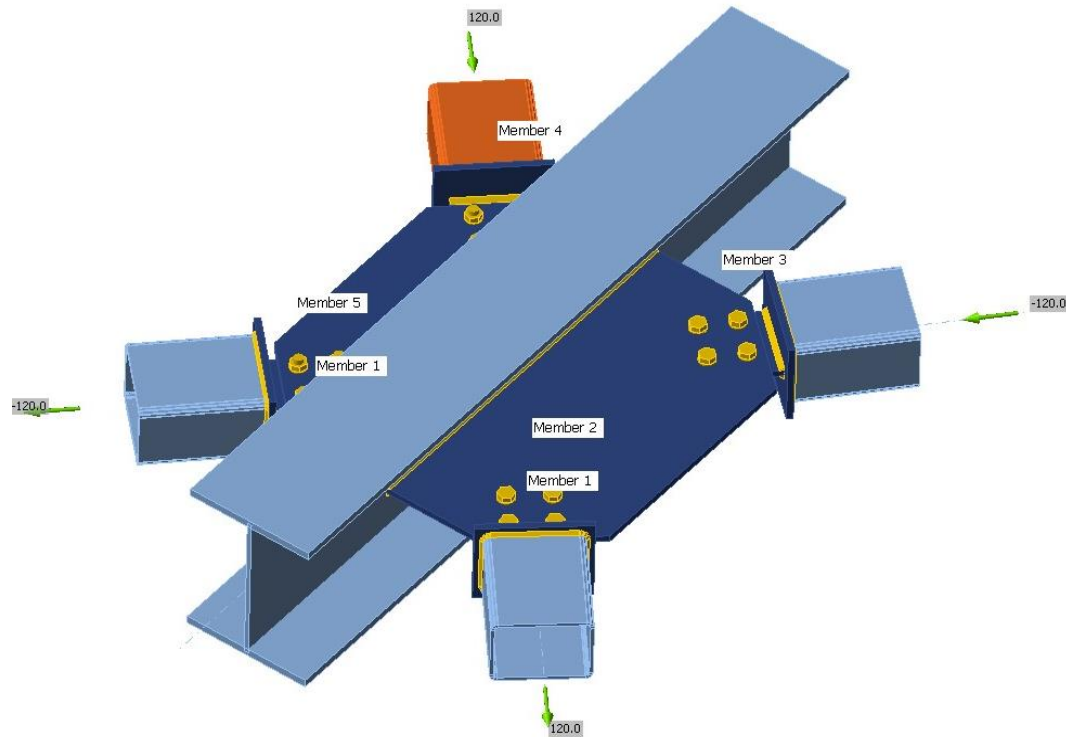
**JOB:** VA COMMUNITY BASED OUTPATIENT CLINIC  
**LOCATION:** ORANGEBURG, SC



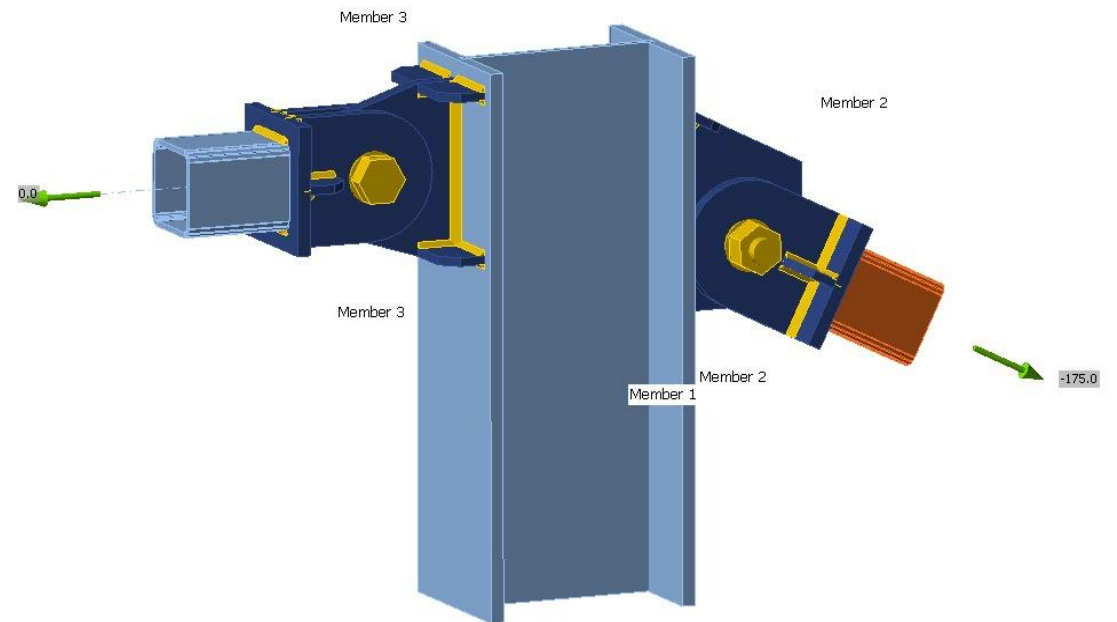
**JOB:** 2BAY TRUCK LOADOUT  
**LOCATION:** CHICO, TEXAS



# Connection Design

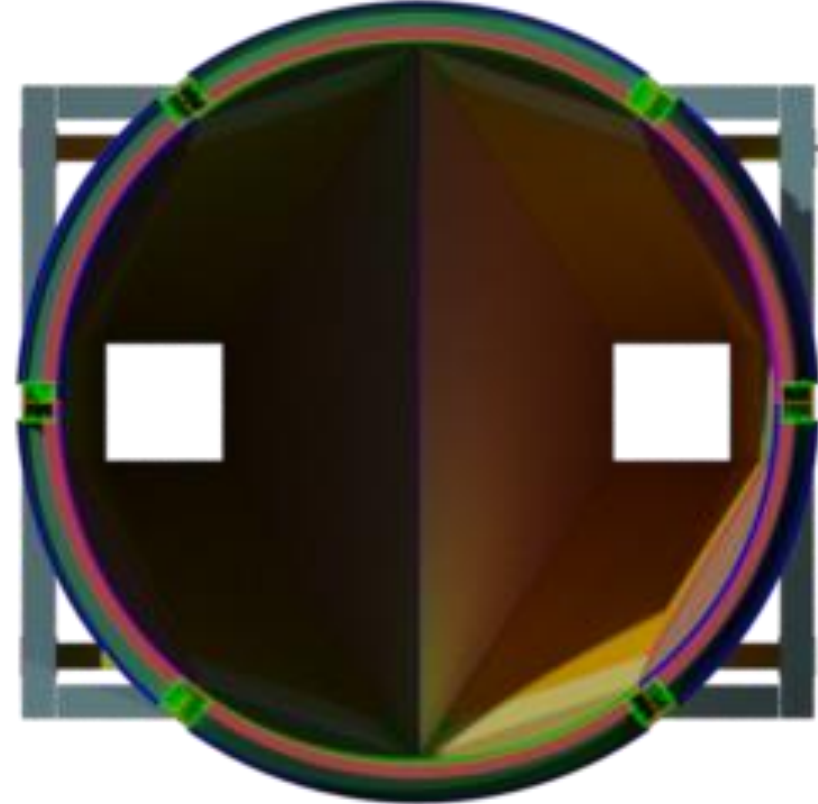
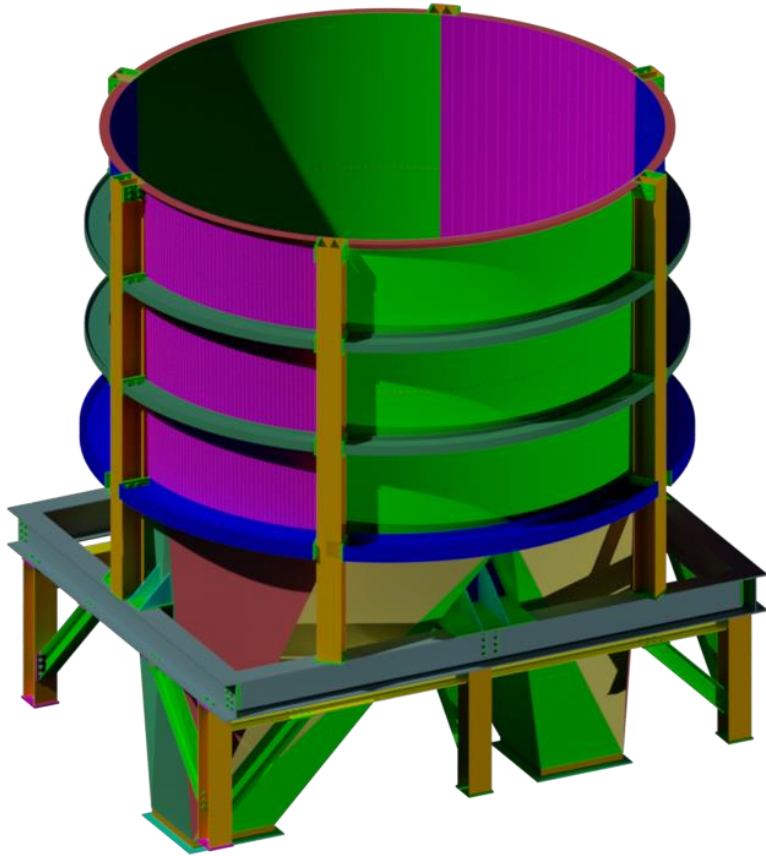


**JOB:** BLOOM LAKE PHASE 2 CRUHSED ORE CONVS  
**CONNECTION :** HSS HORIZONTAL BRACE CONNECTION



**JOB:** BLOOM LAKE PHASE 2 CRUHSED ORE CONVS  
**CONNECTION :** TRUSS PIN CONNECTION

# Advance Steel



JOB: SURGE BIN LAYOUT  
LOCATION: VOLGA, WEST VIRGINIA

# Sworn Statement by Our Clients

- Adept is a team player. They stand behind their commitments. With their vast array of knowledge and experience, they quickly submit shop drawings and provide timely quality Output to the jobsite. Their technology and facility is top-notch. I would highly recommend working with Adept and look forward to our next project with them.
- Adept is a preferred partner for our company. I consider most of them my friends and call them whenever I need. We utilize great businesses who treat us well and accommodate us that's Adept. They provide what we need and keep their promises. We will continue partnering with them for our steel fabrication needs.
- A story of success start with commitment.  
When it concern to Adept, Understanding of the Job, New Ideas, Inventions, Perfection, Ultimate Quality & Positive approach is the equation of their success. Our association is for many years, I wish a grand success for Adept.





Contact us

**Srinivasan Manickam**

**Director & CEO**

Adept Engineering Solutions Private Limited  
585/27, A2A, 2<sup>nd</sup> Floor Ward-A  
Block 3 , Pathi nagar road,  
Namakkal-637001, India.

India: +91 4286 275 957

USA : +1 281 581 8068

+1 610 228 0036

Cell : +91 9629155557

Skype : +1 312 212 3667

Email : [srinivasan@adept-engineering.com](mailto:srinivasan@adept-engineering.com)

Teams : [srinivasan@adept-engineering.com](mailto:srinivasan@adept-engineering.com)

skype : msvasan

Website : [www.adept-engineering.com](http://www.adept-engineering.com)

Follow us   

**THANK YOU**